



**STR**  
RACING SHOCK ABSORBERS

[WWW.STR4X4.COM](http://WWW.STR4X4.COM)

Jowey industrial dahua road Huadu District,  
GuangZhou,Guangdong Province,China

**STR**  
RACING SHOCK ABSORBERS

**Guangdong STR Shock Absorber Manufacturing Co., Ltd**



## About the brand

GUANGDONG STR SHOCK ABSORBER MANUFACTURING CO.,LTD established in the year of 2004. we have own factory based in Zhaoqing city of China and covering more than 8000 Square Meters.

STR product line consists of Coilover, Foam cell shock and piggyback Smoothie shocks as well as adjustment ATS shock and 4x4 lift kits. Our OEM and Tubular buggy upgrade kits offer serious performance upgrades and simple bolt-on installation.

In addition to our busy field-testing schedule, preliminary designs are quantified using our state of the art, Auto-hand oil Fulfill, electro magnetic, shock dyno. automotive data acquisition systems and uses a non-contacting Infrared style transducer to monitor temperature readings.

Drive with STR is their commitment to satisfy customers with heavy durability, reliability and high quality of auto accessories at competitive pricing for worldwide.



**STR RACING SHOCK ABSORBER TEAM**



## PRODUCT SERIES

ST9000	9 steps adjuster foam cell shock .....	05/06
SG8000	Tubular buggy twin coilover shock .....	07/08
RC8000	Aluminum body racing shock .....	09/10
SJ8000	OE aluminum body mono shock .....	11/12
ST8000	OE shock absorber .....	13/14
SC8000	Bypass triple shock .....	15/16
SD8000	Air jack .....	17/18
SR7000	Racing shock absorber .....	19/20
RC7000A	Piggyback twin coilover shock .....	21/22
ST7000	OE 3.0 shock absorber .....	23/24
ST5000	None adjustable shock .....	25/26
ST1000	RTC steering shock .....	27/28
ST1000	Nitro Steering shock .....	29/30

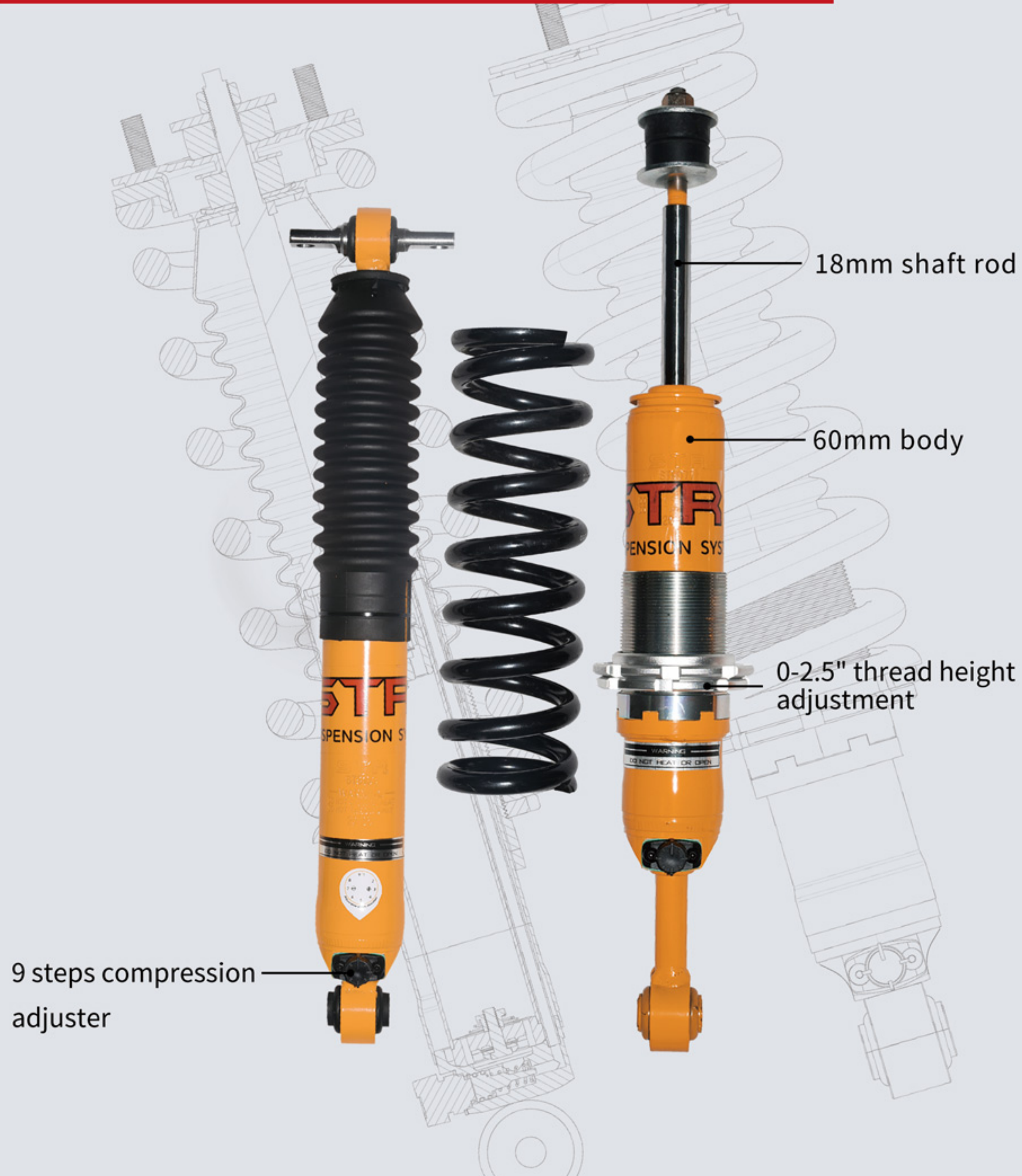
## PRODUCT SERIES

ST1000	Adjustable steering shock absorber .....	31/32
ST2000	Bumper stop .....	33/34
W9000	Coil spring .....	35/36
W8000	Extended shackle .....	37/38
W6000	Panhard rod .....	39/40
W3000	Sway bar .....	41/42
W2000	Uppper control arm .....	43/44





## ST9000 — 9 steps adjuster foam cell shock



60mm tube body design: more oils are stored in the ultra -large tube body, which greatly reduces the temperature generated by high -speed exercise, thereby ensuring the stability of long -term exercise.

18mm hard chromium piston rod: High -quality cleanliness can greatly increase the life of the oil seal.

40mm cylinder piston: Pistons and Pistons have high strength, low friction, no noise, and ensure superiority.

NOK dual oil seal design: Double oil seal design cooperates with high -quality cleanliness to greatly improve the overall life of the product.

German FUCHS high -quality shock absorber oil: All -weather high -quality shock absorber oil ensures stable viscosity.

The "adjustable valve system" foam honeycomb technology: compared to traditional design, more advanced, based on the large amount of oil in the inside, effectively suppress the high temperature generated by high -speed exercise Bubbles, ensure that shock absorption maintains good durability and control performance in exercise.



## SG8000— Tubular buggy twin coilover shock



- Outer barrel diameter: 2.5/2.25 inch Purchasing precision seamless stroke steel pipes in the steel pipe.
- Pistons: 18mm or 22mm.hrc60 high -strength high -quality steel exterior grinding grinding plating.
- Pistons: Hardly oxidized butterfly -shaped piston with 50 or 50mm surfaces.
- The end cover and link hanging ring: The aluminum alloy 6061-T6 high-voltage forging is made in batches. The intensity is much higher than that of ordinary CNC processing.
- Aluminum alloy scales nitrogen gas tank: high -precision high -quality aluminum alloy cylinder, unique design of scales, the heat dissipation area is more widely cooling, ensuring long -distance bikes, durable and non -decay.
- Sealing System: Use the special oil seal (dual -oil seal structure) of a competitive shock absorber to ensure that the shock absorber still maintains intact sealing system when it is instantly high.
- Lubrication system: The lubricating oil of the highest marking of the Athletic shock absorber is used to ensure that the shock absorber is effectively inhibiting the rising oil temperature rising after a long time, causing the shock absorber damping failure.
- Storage cylinder: uses precision grinding and hard oxidation ordinary red oxidation with 6061-T6.
- Fish Eye Bearing: Steering has a greater inclination and has a strong load tolerance and stability. It is recommended to use fish eyes as the first choice.

## Optional

1. 24 steps adjuster compression + 30 steps rebound adjustment
2. DSC dual adjuster + 30 steps rebound adjustment
3. built in bumper stop adjuster
4. compression DSC dual adjuster
5. 24 steps adjuster compression

Flexible adjustment of software and hard damping can be adjusted according to the feelings and needs of your own driving, combined with different road track conditions.

The twisted dental shock absorber can adjust the height of the shock absorber through the twisted ring.Helping the limit of the tire, the most ideal situation is to distribute the weight of the car on average.

The twisted tooth shock absorber can randomly adjust the height of the shock absorber and the size of the internal damping force, which has extremely high playability and flexibility.



## RC8000 — Aluminum body racing shock



Lightweight aviation aluminum tube body makes the damping device have excellent anti-decaying ability.

The design of rotating high-pressure oil pipes is more flexible and convenient to design. It is not afraid of high-speed impact while avoiding the leakage of oil circuit, fish-scale nitrogen cylinder design, and higher heat dissipation performance.

Built-in buffer technology to prevent the vehicle from being aware of the bottoming function at the moment when the extreme fly jump is also known to better protect the car chassis Big shocks caused damage and the greatest protection impact on drivers.

- Outer barrel diameter: 2.5/2.25 inch Purchasing precision seamless seamless stroke steel pipes in the steel pipe.
- Pistons: 18mm or 22mm.hrc60 high-strength high-quality steel exterior grinding grinding plating.
- Pistons: Hardly oxidized butterfly-shaped piston with 50 or 50mm
- The end cover and link hanging ring: The aluminum alloy 6061-T6 high-voltage forging is made in batches. The intensity is much higher than that of ordinary CNC processing.
- Aluminum alloy scales nitrogen gas tank: high-precision high-quality aluminum alloy cylinder, unique design of scales, the heat dissipation area is more widely cooling, ensuring long-distance bikes, durable and non-decay.
- Sealing System: Use the special oil seal (dual-oil seal structure) of a competitive shock absorber to ensure that the shock absorber still maintains intact sealing system when it is instantly high.
- Lubrication system: The lubricating oil of the highest marking of the Athletic shock absorber is used to ensure that the shock absorber is effectively inhibiting the rising oil temperature rising after a long time, causing the shock absorber damping failure.
- Storage cylinder: uses precision grinding and hard oxidation ordinary red oxidation with 6061-T6.
- Fish Eye Bearing: Steering has a greater inclination and has a strong load tolerance and stability. It is recommended to use fish eyes as the first choice.

## Optional

1. DSC dual adjuster (Hi/low speed adjuster)
2. compression DSC dual adjuster + 30 steps rebound adjustment

Flexible adjustment of software and hard damping can be adjusted according to the feelings and needs of your own driving, combined with different road track conditions.

The twisted dental shock absorber can adjust the height of the shock absorber through the twisted ring.

Helping the limit of the tire, the most ideal situation is to distribute the weight of the car on average.

The twisted tooth shock absorber can randomly adjust the height of the shock absorber and the size of the internal damping force, which has extremely high playability and flexibility.



## SJ8000 — OE aluminum body mono shock

Outer barrel diameter: 2.5/2.25 inch Purchasing precision seamless stroke steel pipes in the steel pipe.

Pistons: 18mm or 22mm.hrc60 high -strength high -quality steel exterior grinding grinding plating.

Pistons: Hardly oxidized butterfly -shaped piston with 50 or 50mm surfaces.

The end cover and link hanging ring: The aluminum alloy 6061-T6 high-voltage forging is made in batches. The intensity is much higher than that of ordinary CNC processing.

Aluminum alloy scales nitrogen gas tank: high -precision high -quality aluminum alloy cylinder, unique design of scales, the heat dissipation area is more widely cooling, ensuring long -distance bikes, durable and non -decay.

Sealing System: Use the special oil seal (dual -oil seal structure) of a competitive shock absorber to ensure that the shock absorber still maintains intact sealing system when it is instantly high.

Lubrication system: The lubricating oil of the highest marking of the Athletic shock absorber is used to ensure that the shock absorber is effectively inhibiting the rising oil temperature rising after a long time, causing the shock absorber damping failure.

Storage cylinder: uses precision grinding and hard oxidation ordinary red oxidation with 6061-T6.

Rubber jersey: Made of a new Malaysian raw material, can withstand high -intensity loads, reduce noise, ensure ride comfort, solve the problem of bearing abnormalities, more durable, quantity, quantity The best choice for car production.The best choice for car production.



Suitable for often playing desert, driving style is wild, long -distance crossing desert, Gobi, all aluminum tube body heat dissipation effect faster and more direct, damping and more stable, The self -driving terrain is more complicated (such as the northern region, Xinjiang, Inner Mongolia, etc.) aluminum alloy tube, the heat dissipation effect, faster and more direct.

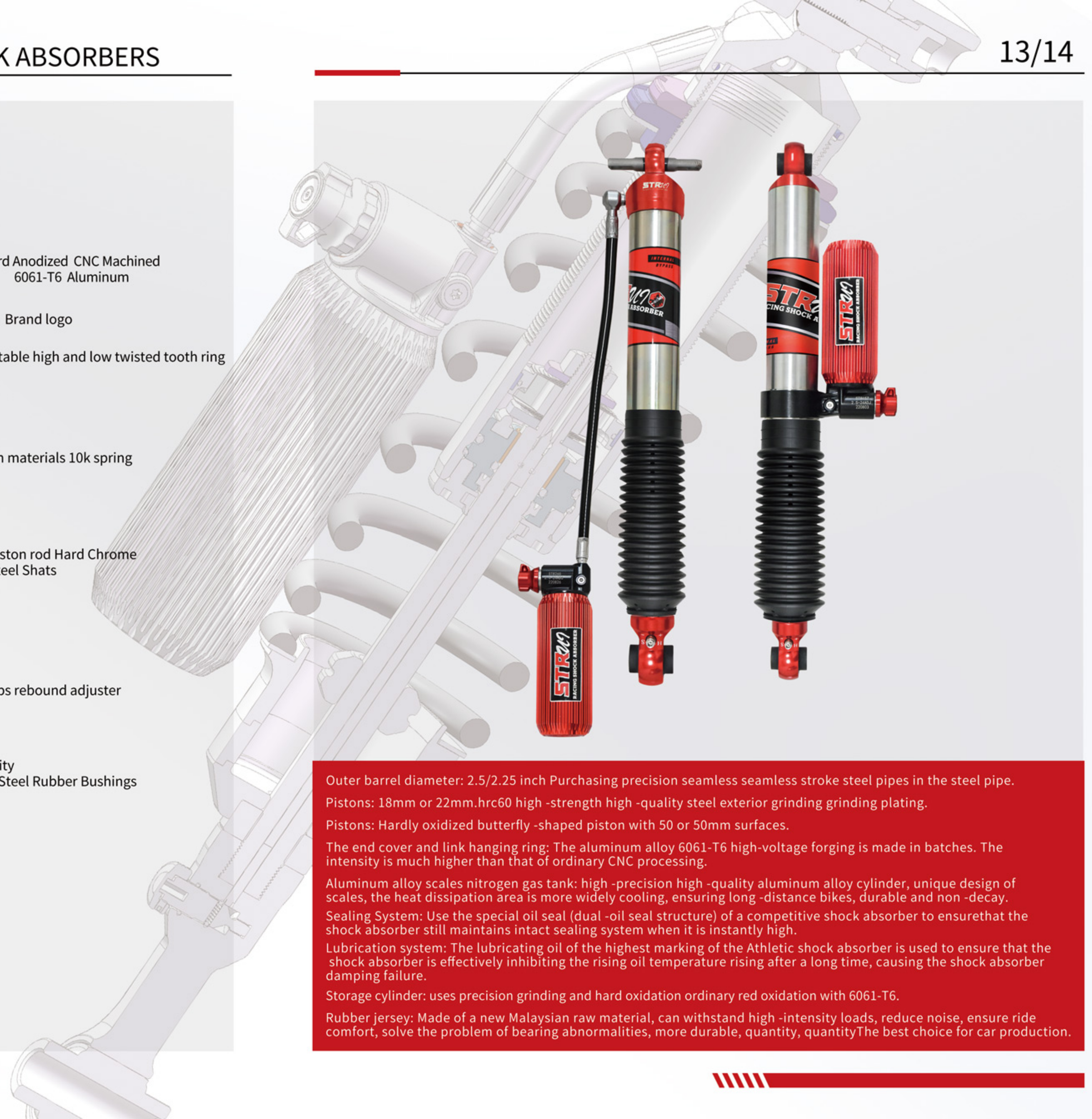


## ST8000 — OE shock absorber



## Optional

1. 24 steps adjuster compression + 30 steps rebound adjustment
2. DSC dual adjuster + 30 steps rebound adjustment
3. built in bumper stop adjuster
4. compression DSC dual adjuster
5. 24 steps adjuster compression



Outer barrel diameter: 2.5/2.25 inch Purchasing precision seamless stroke steel pipes in the steel pipe.

Pistons: 18mm or 22mm.hrc60 high -strength high -quality steel exterior grinding grinding plating.

Pistons: Hardly oxidized butterfly -shaped piston with 50 or 50mm surfaces.

The end cover and link hanging ring: The aluminum alloy 6061-T6 high-voltage forging is made in batches. The intensity is much higher than that of ordinary CNC processing.

Aluminum alloy scales nitrogen gas tank: high -precision high -quality aluminum alloy cylinder, unique design of scales, the heat dissipation area is more widely cooling, ensuring long -distance bikes, durable and non -decay.

Sealing System: Use the special oil seal (dual -oil seal structure) of a competitive shock absorber to ensure that the shock absorber still maintains intact sealing system when it is instantly high.

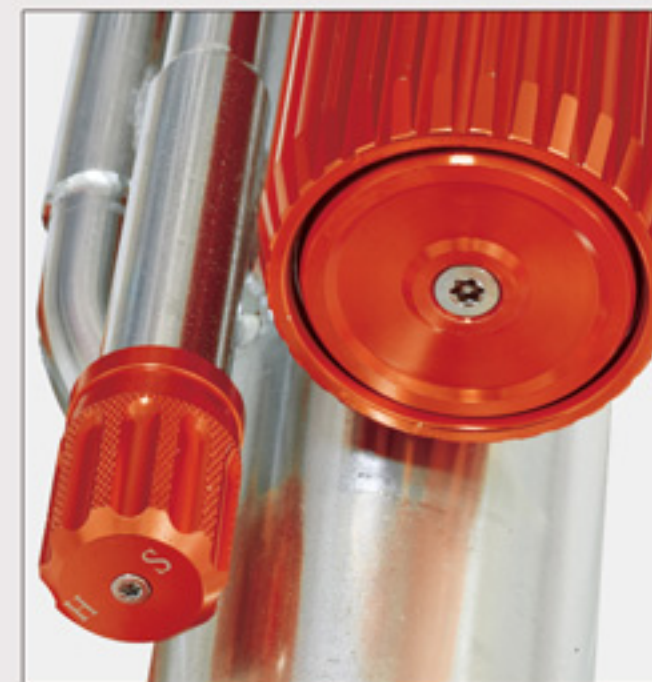
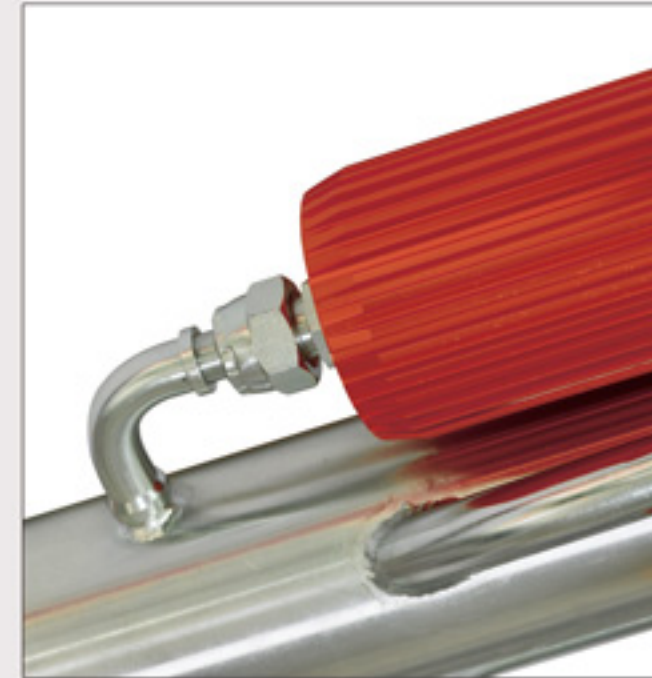
Lubrication system: The lubricating oil of the highest marking of the Athletic shock absorber is used to ensure that the shock absorber is effectively inhibiting the rising oil temperature rising after a long time, causing the shock absorber damping failure.

Storage cylinder: uses precision grinding and hard oxidation ordinary red oxidation with 6061-T6.

Rubber jersey: Made of a new Malaysian raw material, can withstand high -intensity loads, reduce noise, ensure ride comfort, solve the problem of bearing abnormalities, more durable, quantity, quantityThe best choice for car production.



## SC8000 — Bypass triple shock



Outer barrel diameter: 2.5/2.25 inch Purchasing precision seamless stroke steel pipes in the steel pipe.

Pistons: 22mm.hrc60 high -strength high -quality steel exterior grinding grinding plating.

Pistons: Use the 50 -series structure 7075 surface hard oxidation butterfly -shaped piston.

The end cover and link hanging ring: The aluminum alloy 6061-T6 high-voltage forging is made in batches. The intensity is much higher than that of ordinary CNC processing.

Sealing System: Use the special oil seal (dual -oil seal structure) of a competitive shock absorber to ensure that the shock absorber still maintains intact sealing system when it is instantly high.

Lubrication system: The lubricating oil of the highest marking of the Athletic shock absorber is used to ensure that the shock absorber is effectively inhibiting the rising oil temperature rising after a long time, causing the shock absorber damping failure.

Storage cylinder: uses precision grinding and hard oxidation ordinary red oxidation with 6061-T6.

Rubber jersey: made from new Malaysian raw materials, fish eye bearings, and the best choice of mass production cars to solve the problem of bearing abnormalities.





SD8000 — Air jack



Maximum weight: 4580 pounds	Maximum height: 1330mm
Minimum reduction height: 138mm	Hydraulic elevation: 500mm
Compression height: 1000mm	Total length: 1500mm
Height of each job: 8mm	Weight: 11.5kg



- The red pressure rolling valve has an inductive self-stop function that can slow down or fall to the position you need to prevent the quickly landing from damage to the controller.
- The barrel body is made from 6061 T6 aluminum to high hardness corrosion resistance 9 raising card slots, with a load bearing 2 tons.
- The 360 ° adjustable angle is upright to adapt to different environmental terrain operations.
- Black rubber protective jacket avoids the collision of the barrel body and wear.



## SR7000 — Racing shock absorber

Outer barrel diameter: 2.5/2.25 inch Purchasing precision seamless stroke steel pipes in the steel pipe.

Pistons: 18mm or 22mm.hrc60 high -strength high -quality steel exterior grinding grinding plating.

Pistons: Hardly oxidized butterfly -shaped piston with 50 or 50mm surfaces.

The end cover and link hanging ring: The aluminum alloy 6061-T6 high-voltage forging is made in batches. The intensity is much higher than that of ordinary CNC processing.

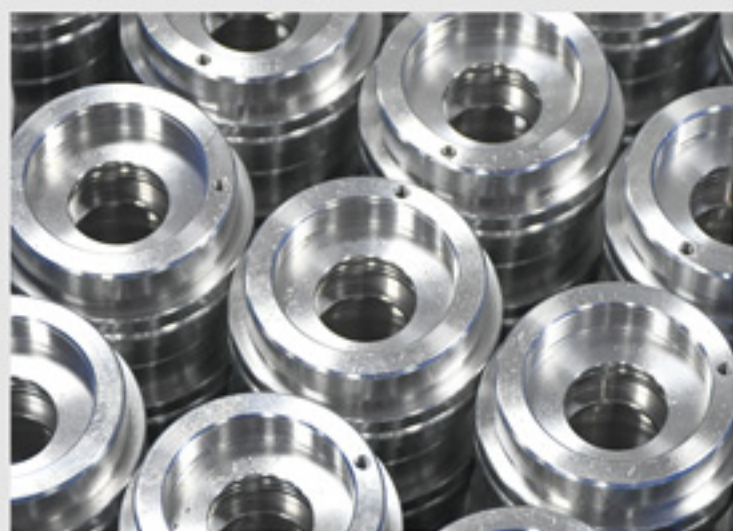
Aluminum alloy scales nitrogen gas tank: high -precision high -quality aluminum alloy cylinder, unique design of scales, the heat dissipation area is more widely cooling, ensuring long -distance bikes, durable and non -decay.

Sealing System: Use the special oil seal (dual -oil seal structure) of a competitive shock absorber to ensure that the shock absorber still maintains intact sealing system when it is instantly high.

Lubrication system: The lubricating oil of the highest marking of the Athletic shock absorber is used to ensure that the shock absorber is effectively inhibiting the rising oil temperature rising after a long time, causing the shock absorber damping failure.

Storage cylinder: uses precision grinding and hard oxidation ordinary red oxidation with 6061-T6.

Fish Eye Bearing: Steering has a greater inclination and has a strong load tolerance and stability. It is recommended to use fish eyes as the first choice.



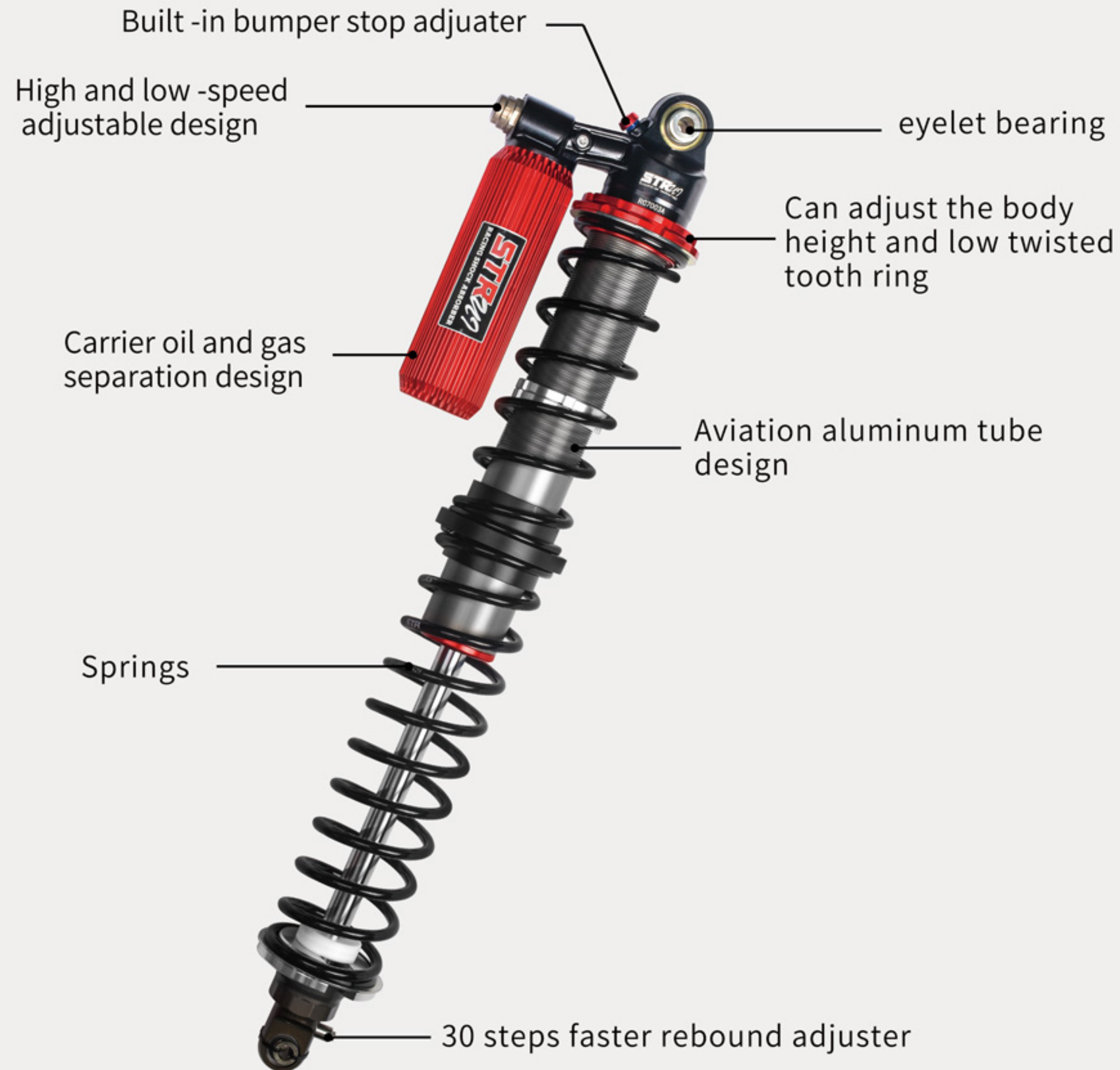
## Athletic Aviation aluminum tube body sports shock avoidance

Born for performance cars, high and low speed compression can be adjusted, rebound technology, aluminum alloy high -efficiency heat dissipation, ensuring that the damping value of shock absorption is not easy to decay, but also improves comfort. In different sections, you can customize the height of the body by adjusting the height of the body, which perfectly combines comfort and operability.





## RC7000A — Piggyback twin coilover shock



- Lightweight aviation aluminum design, fast thermal conductivity, and more stable damping value. Adjustable end -buffer to prevent the vehicle from being used to prevent the bottoming function at the moment of extreme flying jump. This structure is more used in racing technology.
- Better protection of the large impact of the car chassis causes damage and the greatest protection impact on the driver.



**BODY:**2.5" body 7075 honed billet seamlessly aluminum

**SHAFT:** 22mm.HRC60 high-strength high-quality steel, external grinding and plating

**COMPONENTS:**Black anodized, CNC machined 6061-T6 billet aluminum

**SPRING:**Application specific adjustable 3.0" racing spring

**PISTON:**55 series structure 7075 surface hard anodized butterfly piston

**VALVING:**Application specific to maximize performance.

**SEALS:**Redundant sealing pack system, main seal, wiper seal, scraper seal

**OIL:** FUCHS Advanced Suspension Fluid for improved performance at variable temperatures

## Optional

1. 24 steps adjuster compression + 30 steps rebound adjustment
2. DSC dual adjuster + 30 steps rebound adjustment
3. built in bumper stop adjuster
4. compression DSC dual adjuster
5. 24 steps adjuster compression

Flexible adjustment of software and hard damping can be adjusted according to the feelings and needs of your own driving, combined with different road track conditions.

The twisted dental shock absorber can adjust the height of the shock absorber through the twisted ring.Helping the limit of the tire, the most ideal situation is to distribute the weight of the car on average.

The twisted tooth shock absorber can randomly adjust the height of the shock absorber and the size of the internal damping force, which has extremely high playability and flexibility.



**ST7000 — OE 3.0 shock absorber**

The 3.0 series adopts a large oil storage tank. Lightweight aviation aluminum is designed, which not only has a lighter spring quality, but also has good corrosion resistance. Heating ensures that the damping value of the continuous output of shock absorption is not easy to decay, maximize the control, and easily cope with various different sections, and perfectly combines comfort and operability.

The newly designed high -low -speed adjustable knob, and is equipped with a dust-proof cover to protect it from the influence of dust, soil, and stone bumps. In order to keep the surface of the objects clean and dust -free, and more flexibly regulate soft and hard damping, you can adjust according to the feelings and needs of your own driving, and more accurately combine different road track conditions.

The built -in buffer technology prevents vehicles from being used to prevent bottoming function at the moment when the extreme fly jump. It can better protect the large impact of the car chassis and cause the driver to the greatest protection impact.

To strengthen the piston rod more thicker, use a one -time molding process to ensure that the shock absorber piston rod has high -strength anti -corruption and abrasion resistance. With its solid anti -metal fatigue, the vehicle is stable in the body when the high -strength off -road leap is stable when the body is stable. The best performance can ensure that driving is safer.

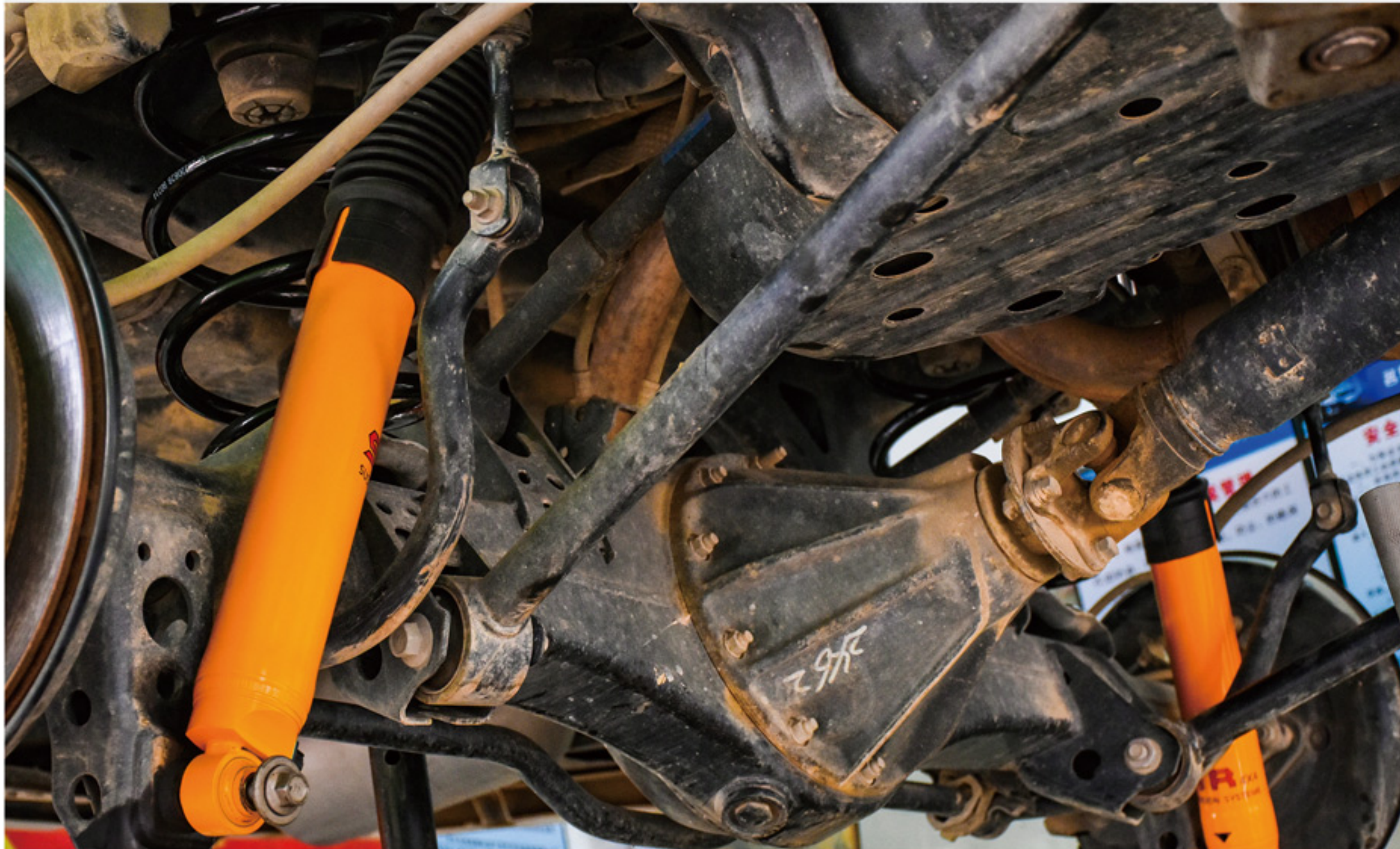




## ST5000 — None adjustable shock

- Japan NOK oil seal to insure oil leaking in long term using to insure the product life.
- High performance and high density FUCHS oil from Germany.
- inside double extra foam cell, more efficient to deduct the temperature and the oil bubble when driving, make the shock absorber's damp more stable to insure safety driving.
- 18mm piston shaft part, enhance the intensity of persistence.
- 60mm tube body to insure the safety control the vehicle in the situation of hollow road and the over loading.

ST5000 SERIES : two directions tension ratio, 3 times above the original parts. High performances in the road and racing. 70% city, 30% off road.



COMBINED FOAM CELL AND OIL SHOCK ABSORBER



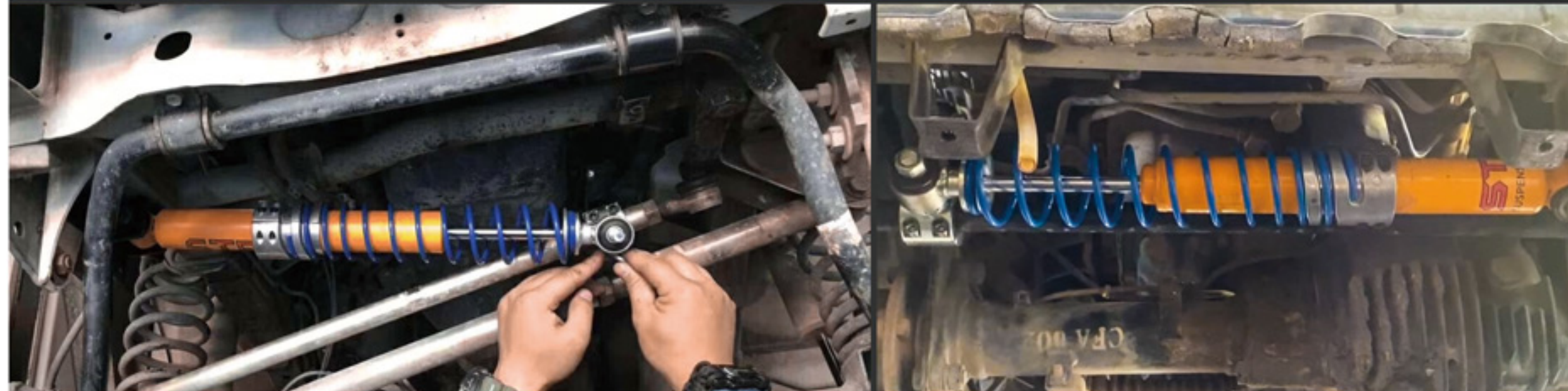


## ST1000 — RTC steering shock

### RTC STEERING DAMPER

Before any of our shocks reach production, they' ve had to stand the test of time and live up to incredible abuse by the fastest athletes in racing. We push the boundaries to give you that same precise control and race-proven performance you can feel. Our complete line of bolt-on, FactorySeries coil-over shocks provide improved damping in any terrain.

auxiliary return to center.Steering Damper , When the car is not in stable, can't control in the changed large tyres as the Friction increases but the power of car turning did not change ,If change to install the steering damper ,Those problems will be eliminated



Solve the steering unclear gap, solve the large steering wheel thug



## ST1000 — Nitro Steering shock

### ATS STEERING DAMPER

Before any of our shocks reach production, they' ve had to stand the test of time and live up to incredible abuse by the fastest athletes in racing. We push the boundaries to give you that same precise control and race-proven performance you can feel. Our complete line of bolt-on, FactorySeries coil-over shocks provide improved damping in any terrain.

auxiliary return to center.

Steering Damper , When the car is not in stable, can't control in the changed large tyres as the Friction increases but the power of car turning did not change ,If change to install the steering damper ,Those problems will be eliminated.

Steering stabilizers help take the load off your steering components and keep your tires tracking straight and true. Oversized offroad tires have a tendency to seek out traction in any direction. The large knobs and open tread pattern can cause your front end to wander on or off the road. Our steering stabilizers use the same advanced damping technology contained in our Performance and Evolution Series shocks to tame steering feedback from even the most aggressive tires.



Effective improvement steering is unclear



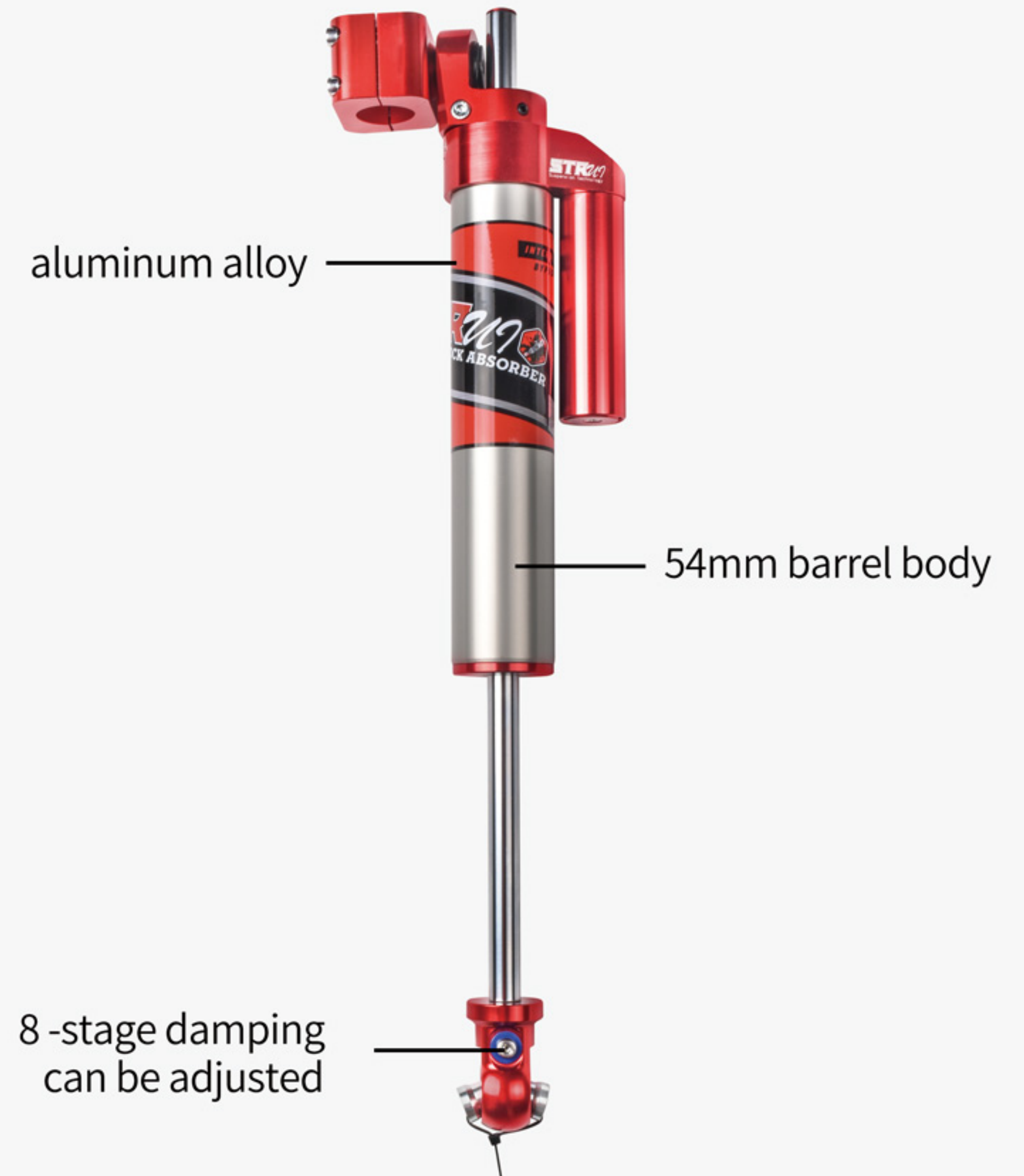


## ST1000 — Adjustable steering shock absorber

### Adjustable ATS steering shock absorption

Adjustable ATS nitrogen steering shock absorber series is adopted.

Not only has the lighter spring quality, but also has good efficient heat dissipation performance. External nitrogen tanks put oil and high pressure Separate nitrogen to ensure that the performance under various temperatures and climate prevent rugged pavement steering wheel, maximize filtering The vibration of tire feedback improves stability and handling, easily cope with various sections of different sections, perfectly combines comfort and operating.



The adjustable ATS nitrogen steering shock absorber series is adopted. It has an 8-stage damping adjustable knob. The strength of the intensity of the desire can be adjusted. It can be adjusted according to different needs and road sections. , Increase the control and control of the vehicle, and improve the comfort of the vehicle's driving direction.



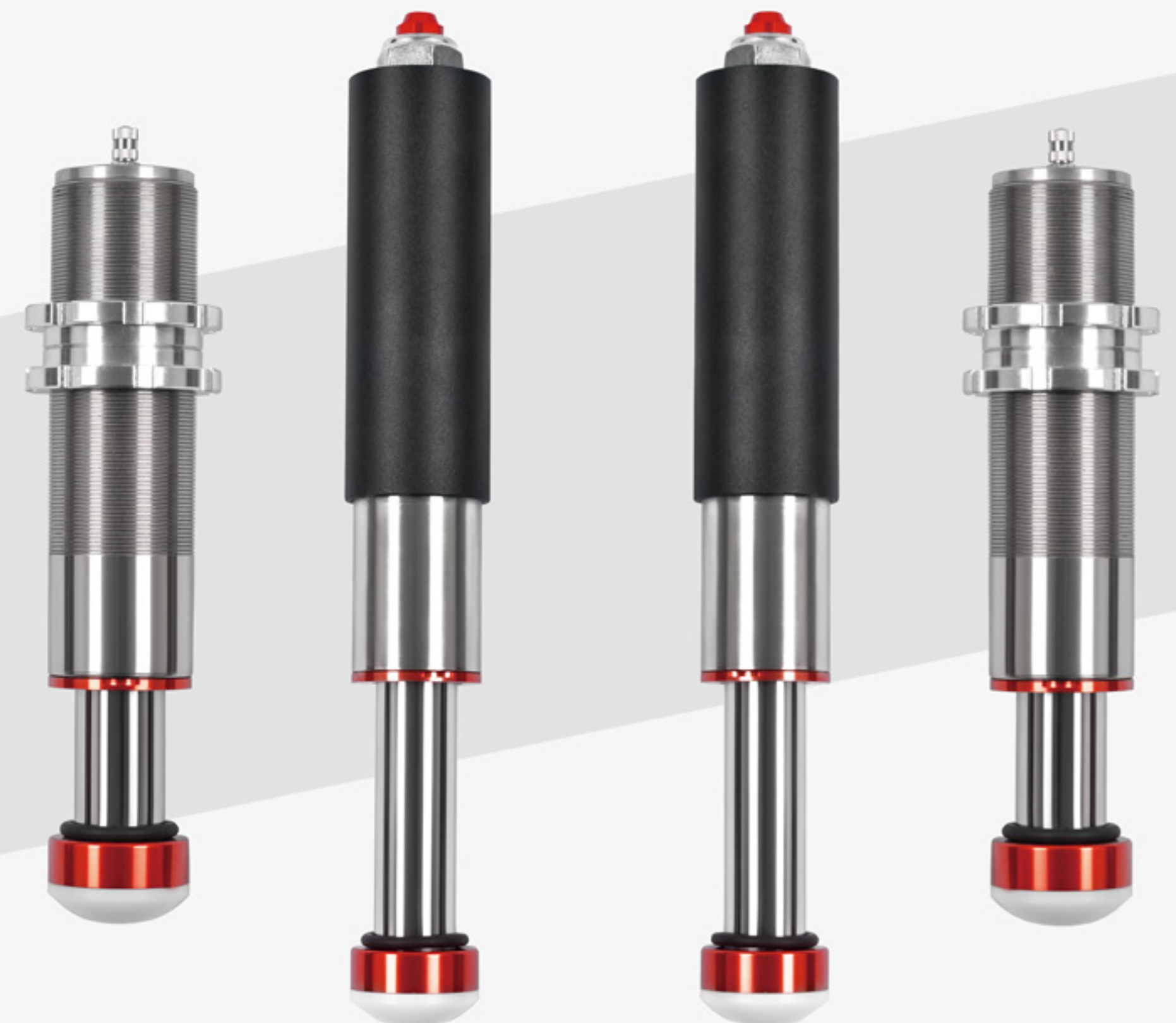
## ST2000 — Bumper stop



## BUMPER STOP

Before any of our shocks reach production, they' ve had to stand the test of time and live up to incredible abuse by the fastest athletes in racing. We push the boundaries to give you that same precise control and race-proven performance you can feel. Our complete line of bolt-on, Factory Series coil-over shocks provide improved damping in any terrain.

- The high accuracy to + / - 0.001 to ensure the function of the oil seal oil seal installation hole and long-lasting.
- Can bear the pressure of 100000 pounds per square inch, hard chromium plating, high precision polishing to prolong the service life of as far as possible.
- All finishe aluminum comes from the united states military technology to ensure the quality. Top and bottom ball bearing connection design,wear resistance,impact resistance.
- The special piston valce design,can effectively decrease and to block dust and moisture.from air inlet cap.
- Fixed installation bushing structure,make don' t have to be carried outonthe tube body welding and undermine its strength.
- Compression wear-resisting nylon contact won' t produce metal blunt option.
- When using avoid leak, ensure the service life of the shock absoeber





## W9000 — Coil spring

STR COIL SPRINGS are available in linear and progressive designs. They come in various heights and load carrying capacities enabling the optimum suspension system to be achieved. STR coil springs are manufactured on computer controlled coiling machines, scragged before and after shot peening, load tested and supplied in a durable powder coat finish.



High-strength chromium silicon alloy  
spring silk firing Design of ultra-long  
fatigue life Anti-corrosion and rust,  
stable and durable

Elastic test exceeds  
**50W/Sub-trial**





## W8000 — Extended shackle

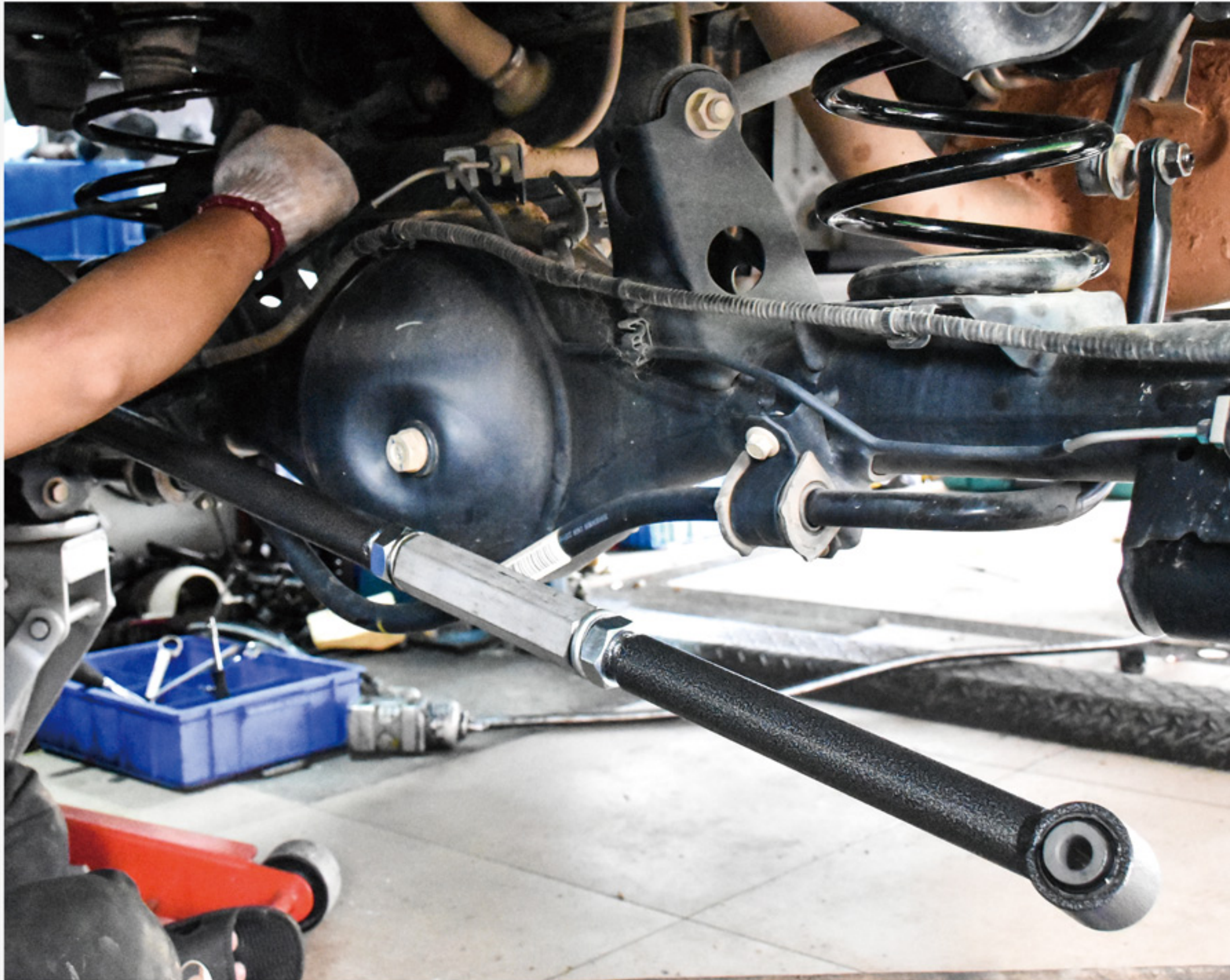
STR GREASABLE SHACKLES make the relatively messy and time consuming task of bush lubrication incredibly easy. A greased shackle pin greatly reduces friction and operating temperatures and prolongs the life of the bush. However, grease will dissipate over time and is therefore necessary to regrease. Standard shackles make this an arduous task but STR greasable shackles and pins allow the greasing of bushes without the need to remove the springs.





## W6000 — Panhard rod

seemingly simple, the actual is not simple, for many off-road vehicles, are a problem. Do the car more than 2 inches As the distance between the bridge and the beam increases, the angle of the thrust rod will change. On the surface, the displacement of the rear axle will be large Crooked to the right (additional side). Solve this problem again will be used to increase the bridge or beam on the thrust rod bearing or increase The length of the thrust rod.



The stop rod is connected between the beams and the rear bridge to ensure that the rear bridge and the front bridge are basically remained in a central axis. The role is to improve the stability of the car, and it can also be understood as a reduction of left-right swing.





## W3000 — Sway bar

### SWAY BARS

Before any of our shocks reach production, they' ve had to stand the test of time and live up to incredible abuse by the fastest athletes in racing. We push the boundaries to give you that same precise control and race-proven performance you can feel. Our complete line of bolt-on, Factory Series coil-over shocks provide improved damping in any terrain.

Installing an STR Sway Bar kit or installing polyurethane bushings and new bracketson your original sway bar is a basic weeked project that will reward you with improved handling and the quality of the fnest products available Plan accordingly based on your experience level. Before you begin. read and familiarze yourself with these instructions and make sure you have all the required tools on hand. As with any type of suspension work. we recommend a four wheel alignment with a qualifed repair facility. Thank you for purchasingour STR Sway Bar kit. We appreciate your business!





## W2000 — Upper control arm

### CONTROL ARM

Before any of our shocks reach production, they' ve had to stand the test of time and live up to incredible abuse by the fastest athletes in racing. We push the boundaries to give you that same precise control and race-proven performance you can feel. Our complete line of bolt-on, Factory Series coil-over shocks provide improved damping in any terrain.

Control arms, sometimes called “A arms,” are the core of your front suspension system. In simple terms, control arms are the link that connects your front wheels to your car. One end connects to the wheel assembly and the other end connects to the framework of your car.

The upper control arm connects to the uppermost area of the front wheel and the lower control arm connects to the lower most area of the front wheel, with both arms then attaching to the frame of the car. If you have independent rear suspension, the design is similar.

